

## >> CSI System Components / 700 MHz Compatible

The CSI Product Division now offers 700 MHz compliant passive components for In-Building Distributed Antenna Systems. These products ensure DAS infrastructure installed today, for support of PCS, Cellular, & SMR 800 Bands, will also support future LTE and AWS commercial and 700 MHz Public Safety bands.

### ANTENNAS

#### Indoor/Outdoor Panel Antenna - Quad Band

##### Specifications

Model Number	CSI-AP/698/2.5K/7-10
Frequency Range	698-894 MHz   1700-2200 MHz
Gain	7 dBi (698-894 MHz)   10 dBi (1700-2200 MHz)
Horizontal Beamwidth	70° (698-894 MHz)   60° (1700-2200 MHz)
Vertical Beamwidth	50° (698-894 MHz)   45° (1700-2200 MHz)
Polarization	Vertical
VSWR	<1.5: 1
Max Input Power	100 Watts



#### Omnidirectional Antenna - Quad Band

##### Specifications

Model Number	CSI-AO/700/2.5K/3
Frequency Range	700-960 MHz   1710-2500 MHz
Gain	3 dBi
Polarization	Vertical
VSWR	<2.0 : 1 (700-960 MHz) <1.5 : 1 (1710-2500 MHz)
Max Input Power	50 Watts



#### Yagi Antenna / 700 MHz

##### Specifications

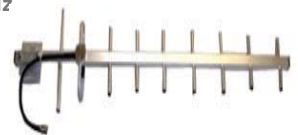
Model Number	CSI-AY/700-806/11
Frequency Range	700-806 MHz
Gain	11 dBi
Horizontal Beamwidth	48°
Vertical Beamwidth	42°
Polarization	Vertical
VSWR	<1.5 : 1
Max Input Power	100 Watts



#### Yagi Antenna / Public Safety, 700 MHz

##### Specifications

Model Number	CSI-AY/746-896/11
Frequency Range	746-896MHz
Gain	11 dBi
Horizontal Beamwidth	48°
Vertical Beamwidth	42°
Polarization	Vertical
VSWR	<1.7 : 1
Max Input Power	100 Watts



# >> CSI System Components / 700 MHz Compatible

## SYSTEM COMPONENTS

### Power Dividers

#### Specifications

Model Number	CSI-SPD(channel)/700-2.5K/N
Frequency Range	700-2500 MHz
Channels	2, 3 or 4
Isolation	>20 dB
Insertion Loss	0.55 dB (2 channels) 0.8 dB (3 and 4 channels)
Total Loss	3.5 dB (2 channels) 5.27 dB (3 channels) 6.5 dB (4)
VSWR	
In	1.35 : 1
Out	1.20 : 1



### Directional Couplers

#### Specifications

Model Number	CSI-DC(coupling)/700-2.5K/N
Frequency Range	700-2500 MHz
Coupling Options	6, 10, 15, 20, 30
Input Signal	+5 dBm
Output Signal	+3.1 dBm
Insertion Loss (dB)	0.5 (6, 10, and 15 coupling options) 0.4 (20 and 30 coupling options)
Average Input Power	100 Watts



### Cross Band Couplers

#### Specifications

Model Number	CSI-CBC/698-2.3K/N
Frequency Range	698-900 MHz   1710-2300 MHz
Rejection	>50 dB
Stopband Attenuation	>90 dB, typically >95 dB
Insertion Loss	0.3 dB Band Center Typical
Passband Ripple	<0.3 dB
Input/Output Impedance	50 Ohm
VSWR	<1.4: 1
Max Input Power	150 Watts



### Attenuator

#### Specifications

Model Number	CSI-ATN6-2W(attenuation)
Frequency Range	DC-6.0 GHz
Attenuation	3, 5, 6, 10, 15, 20, 30 dB
Input Power	2 Watt Average @ 25 C
VSWR	DC-2.5 GHz_1.20: 1 Max 2.5-6.0 GHz_1.35: 1 Max
Power (Peak)	250 Watts



## PRODUCT SUPPORT CONTACTS

If you have any additional questions feel free to contact us!

Product Inquires: 1.866.670.2211

Tech Support: 1.866.360.7297 or [support@cellularspecialties.com](mailto:support@cellularspecialties.com)